

MISO SOUP

Soya bean soup with tofu
and spring onion

~~10€~~

SALADS

SNOW CRAB SALAD

Mesclun salad with lime dressing & snow crab

~~20€~~

WAKAME SALAD

Japanese seaweed salad with goma dressing

~~15€~~

APPETIZERS

EDAMAME

Steamed soya bean with sea salt

~~8€~~

TEMPURA SHRIMPS *4PCS

Shrimps* tempura with Japanese soya dressing and ginger

~~20€~~

ROCK SHRIMPS

Shrimps in tempura and spicy mayo dip

~~21€~~

BAO BUNS *3PCS

Duck leg confit & mango chutney

~~22€~~

HAMACHI

Hamachi sashimi with ponzu dressing, garlic pure & jalapeno slices

~~34€~~

CARPACCIO

Today's fish Usuzukuri (carpaccio)

~~36€~~

CLASSIC ROLLS

HOSOMAKI

VEGETARIAN MAKI *6PCS

Avocado, carrots, cucumber

~~11€~~

TEKKA MAKI *6PCS

Tuna, avocado, cucumber

~~14€~~

SHAKE MAKI *6PCS

Salmon avocado

~~14€~~

SUZUKI MAKI *6PCS

Sea bass, spring onion & wasabi

~~12€~~

CRAB MAKI *5PCS

Soft shell crab, cucumber spicy mayo, tobiko

~~16€~~

INSIDE OUT ROLLS

URAMAKI

PHILADELPHIA ROLL *8PCS

Salmon, cream cheese & sesame seeds

~~20€~~

SPICY TUNA ROLL *8PCS

Spicy tuna tartare, cucumber & wasabi seeds

~~22€~~

EBI TEMPURA ROLL *8PCS

Crispy shrimps, Japanese mayo & tobiko

~~24€~~

CALIFORNIA ROLL *8PCS

Snow crab, avocado, cucumber & sesame seeds

~~25€~~

HOUSE SPECIAL ROLLS

UNI ROLL *8PCS

Snow crab, cucumber, sea bass, sea urchin & rice vinegret

~~29€~~

KING CRAB ROLL *8PCS

Shrimp tempura, avocado, King crab & yuzu kosho mayo

~~35€~~

DRAGON ROLL *8PCS

Soft shell crab, avocado, unagi, teriyaki sauce & tobiko orange

~~27€~~

HAWAIIAN ROLL *8PCS

Snow crab, cucumber, tuna, salmon, teriyaki sauce & ikura

~~31€~~

HAMACHI TRUFFLE *8PCS

Boiled shrimps, asparagus, Hamachi tartare & fresh truffle mayo

~~33€~~

TORCHED SUZUKI *8PCS

Shrimps tempura, spicy tuna, cucumber, sea bass, spicy mayo & spring onion

~~35€~~

ROYAL TEMPURA *8PCS

Avocado, King crab, truffle dressing & asparagus

~~37€~~

NIGIRI / SASHIMI

2PCS

SALMON	9€
TUNA	10€
HAMACHI	9€
SEA BASS	9€
TORO	25€
EBI	14€
BBQ EAL	12€



CHEF'S COMBO

CHEF COMBINATION NO.1

California, Philadelphia, Salmon maki,
2 nigiri salmon,
2 nigiri Hamachi

~~75€~~

CHEF COMBO DELUXE

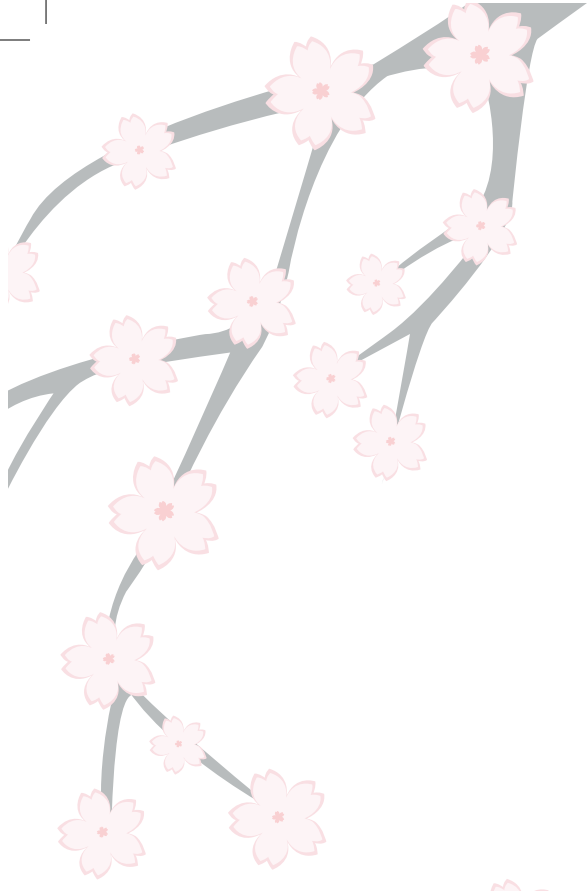
California, Salmon maki, Spicy tuna, Hawaiian
2 Nigiri salmon,
2 nigiri tuna,
2 Sashimi salmon,
2 sashimi tuna,
2 sashimi Hamachi

~~134€~~

SASHIMI COMBINATION (15pcs)

Salmon, Tuna, Hamachi, Sea bass, Ebi

~~77€~~



padman

SUSHI CORNER

MAIN

BLACK COD MISO

Black Cod caramelized with sweet miso

~~44€~~

WAGYU BEEF TATAKI

Seared premium wagyu beef cut into thin slices, dressed ponju and butter Truffle sauce

~~82€~~

UDON BLACK ANGUS NOODLES

Fresh Udon noodles on wok with Wagyu beef, shitake carrots, onions and Japanese soya salsa

~~42€~~

DESSERTS

MOCHI *4PCS

Japanese ice cream Green tea, chocolate, coconut mango, strawberry cheesecake

~~22€~~